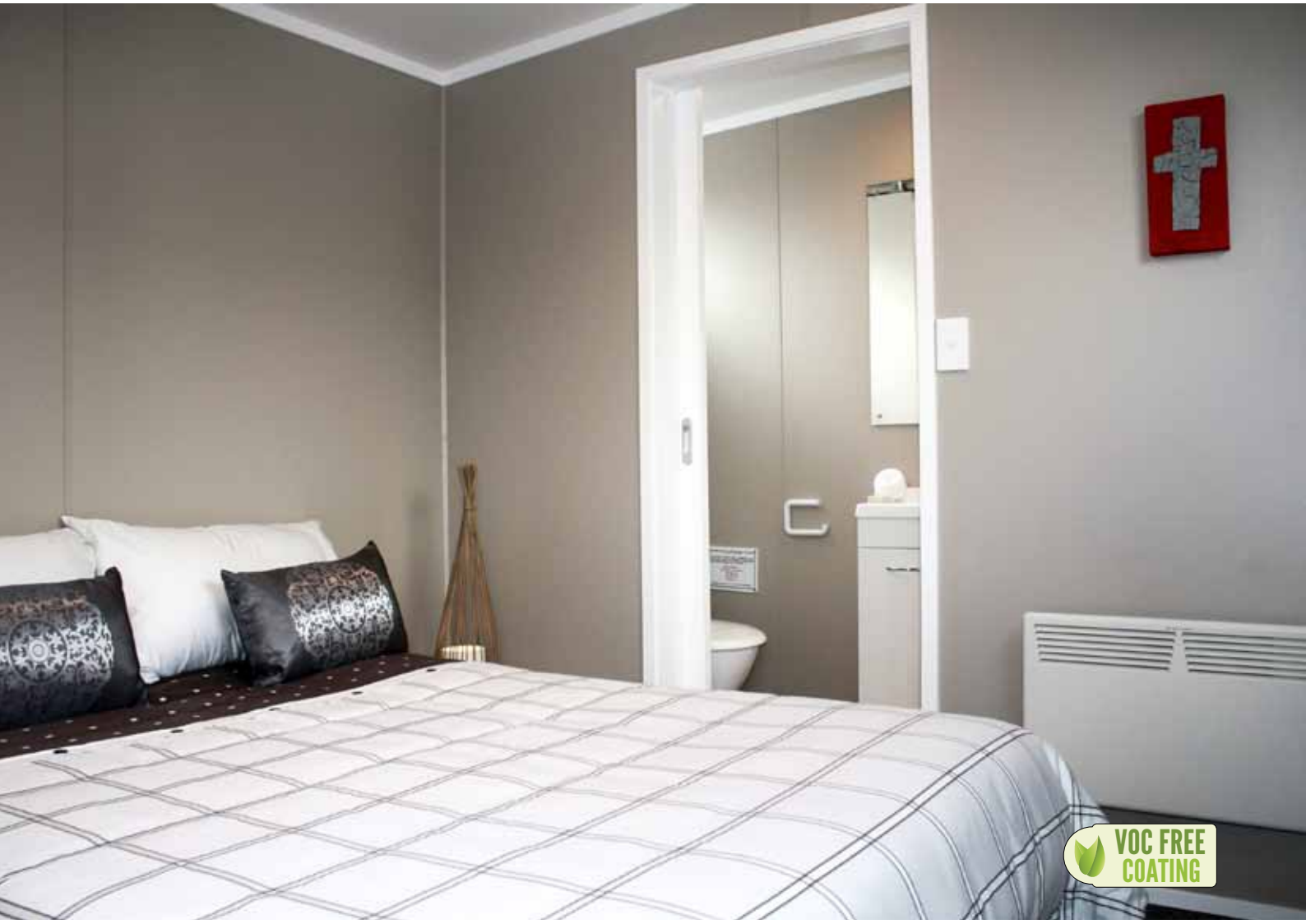
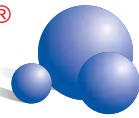


CLIMATELINE[®]

Finished Plasterboard



 VOC FREE
COATING

Case Study

NZ Transportables



www.climatesurfaces.com

SPEED AND FLEXIBILITY THE KEY IN TRANSPORTABLE HOMES

Custom coloured pre-finished plasterboard with a colour matched aluminium panel joint.



There are hundreds of decisions to be made about building products in every construction project. But take a home that's designed for transportation and you get a new and unique set of specifications.

Add to that hundreds of Christchurch families waiting for a somewhere to live and you'll understand how vitally important product choice is for Victor Kendall, managing director of NZ Transportables.

The company builds accommodation units in its Auckland and Christchurch factories and transports them to site completely finished. The company recently won a contract with the Department of Building and Housing to provide transportable homes for

displaced victims of the Christchurch earthquakes to live in while their homes are repaired, or torn down and rebuilt.

It was with a need to fill this contract in a timely manner that encouraged Victor to specify ClimateLine® plasterboard. Because it is pre-finished, and easy to install, it does away with the finishing sub-trades and eliminates building dust. What's more, it's proven to be flexible during movement.

"The main benefit is the pre-finished surface and the speed of installation. But it also has nice edging and can be used right through the whole house. From the wet areas to the living room ceilings, we use the same product throughout."

*-Designer, Peter Hill,
Hill Design & Engineering*

“We built a couple of units in Auckland, using a steel frame for extra rigidity and featuring ClimateLine®. Then we moved them from Auckland to Christchurch,” says Victor.

“There was a lot of movement on the trailer but ClimateLine® came out really well. The jointing system allows for expansion and movement, which is a great benefit. Normal plastering and stopping would have moved and cracked in that journey.”

The steel framing design provides the required bracing units, eliminating the need to use plasterboard for bracing as it is traditionally done in New Zealand.

The custom jointing system is available in either a matching powder coated finish or anodised aluminium. The hinges allow the pre-finished sheets to be laid vertically or horizontally and are simple to install. Designer for NZ Transportables, Peter Hill of Hill Design & Engineering, says he was curious about the product when it first came to his attention and upon investigation saw that “it just made sense”.

“The main benefit is the pre-finished surface and the speed of installation. But it also has nice edging and can

be used right through the whole house. From the wet areas to the living room ceilings, we use the same product throughout.”

Victor agrees that speed of installation is the product’s biggest advantage.

“It doesn’t hold up building time with plastering, stopping and painting. And people like it. Everyone who’s seen it loves it,” he says.

NZ Transportables use sheets in two colours, a popular taupe shade (pebble) on the walls and a crisp white (Arctic Frost) on the ceilings. However, ClimateLine® is available in a range of standard finishes and can be ordered in any custom shade, including corporate colours.

“We are (the) biggest users of ClimateLine® at the moment and we’re exploring other uses for it in commercial applications,” says Victor. Designer Peter Hill says he will continue to use the product also.

“I can see how it would be useful in commercial projects, too. Now that I’m familiar with it and know all its technical details, I wouldn’t hesitate in specifying it again.”



“It doesn’t hold up building time with plastering, stopping and painting.... What’s more, it’s proven to be flexible during movement.”

- Managing Director, Victor Kendall, NZ Transportables Ltd.

ClimateLine can be used in dry, wet and hygienic areas in both commercial and domestic projects. A range of joiners are available to suit all design specifications. The durable lining material can be found in many projects around the country including hospitals and medical buildings, restaurants, early childhood learning centres, transportable homes, offices and residential homes.

For technical and product literature visit www.climatesurfaces.com

Climate Coating Ltd

Customer Services Phone 0800 256 111

PO Box 107 018, Airport Oaks, Auckland, NZ

Phone: (64 9) 256 7879 / Fax: (64 9) 256 7878

Australia Phone: 1800 256 111

Website www.climatesurfaces.com