

CLIMATETM POWDERCOATED PLASTERBOARD LINING SYSTEM

Build walls fast



NO PLASTERING



NO SANDING



NO PAINTING

Applications

Office & Commercial

- Significantly reduces disruption to a working office by eliminating plastering and painting from site.
- Reduce the time for lining and finishing by up to 60%.
- Integrate ClimateLine® into a demountable partition suite and you'll create the ultimate flexible working environment.
- Office / Education / Healthcare / Aged Care.



Office Refurbishment



Childcare Centre

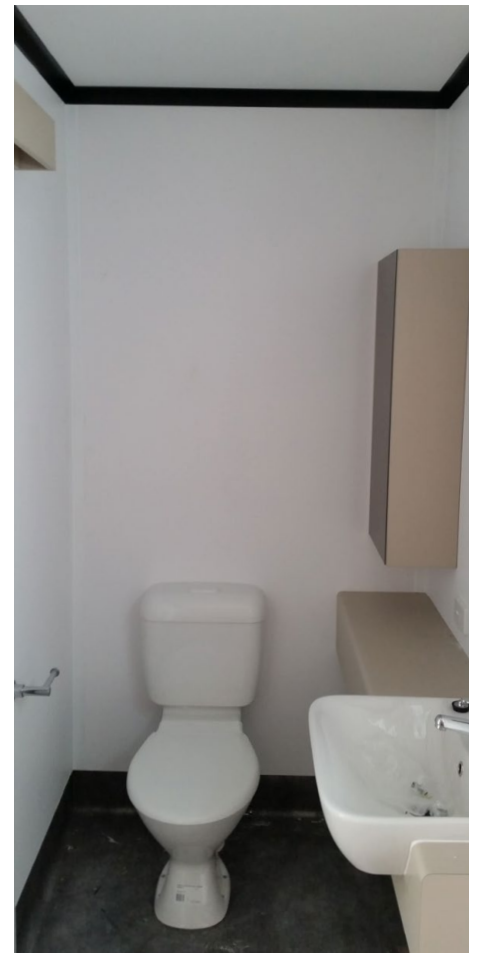


Reception - Arctic frost installed with negative detail jointer horizontally

Applications

Pre-fab/Modular

- Contemporary, clean appearance.
- Eliminates wet trades allowing for a significantly faster build.
- Board joints won't crack during module transportation.
- Fast and simple to repair any damage.
- Available in cut to size panels for larger projects.



Panel jointer range

Jointers available in 2700mm lengths finished in a matching powder coat.



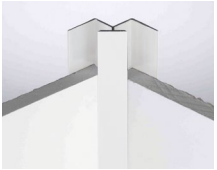
H



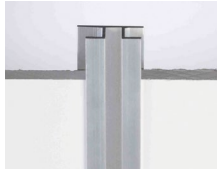
End Cap



External Corner F



Internal Corner Jointer



Negative Detail



Silicon



Arctic Frost

Colour

Stock is available in Arctic Frost, a clean crisp white with a contemporary matt sheen that does not compromise washability or durability while minimising glare and creating a very consistent finish.

Project Solutions

A customised solution to suit your design, install and delivery needs.

For projects that require 300m² or more, ClimateLine can be supplied in a wide range of customised colours combined with custom board length, width and thickness. An ideal solution to optimise the benefits of ClimateLine.



About the coating

ClimateLine is powder coated with Climate Decor Shield.

- Withstands wear & tear.
- Stains and marks can be removed with a soft wet cloth.
- The matt finish softens the effect of glare and glancing light.
- No odour and contains no VOCs.



Panel Range

Board types:

- **ClimateLine® Standard** – dry areas.
- **ClimateLine® Aqua** – kitchens, laundries, bathrooms (not suitable for wet walls).

Sizes:

- **Standard** – 2400 x 1200 x 10mm and 2700 x 1200 x 10mm.
- **Aqua** – 2700 x 1200 x 10mm.

Compliance

Durability

ClimateLine will meet the durability requirements of NZBC B2.3.1(c) for 5 years when installed as per specifications.

Fire Performance

New Zealand: NZBC C/UM2 Group 1S

Australia: BCA C1.10A Group 1

Tested to New Zealand and Australian standards in accordance with the relevant building codes by an independent registered laboratory.

Test reports available on request.

Accessories

Touch Up Paint

Specially formulated acrylic paint matching the powder coating for easy and seamless touch-ups.

See ClimateLine Repair Process document at www.climatesurfaces.com

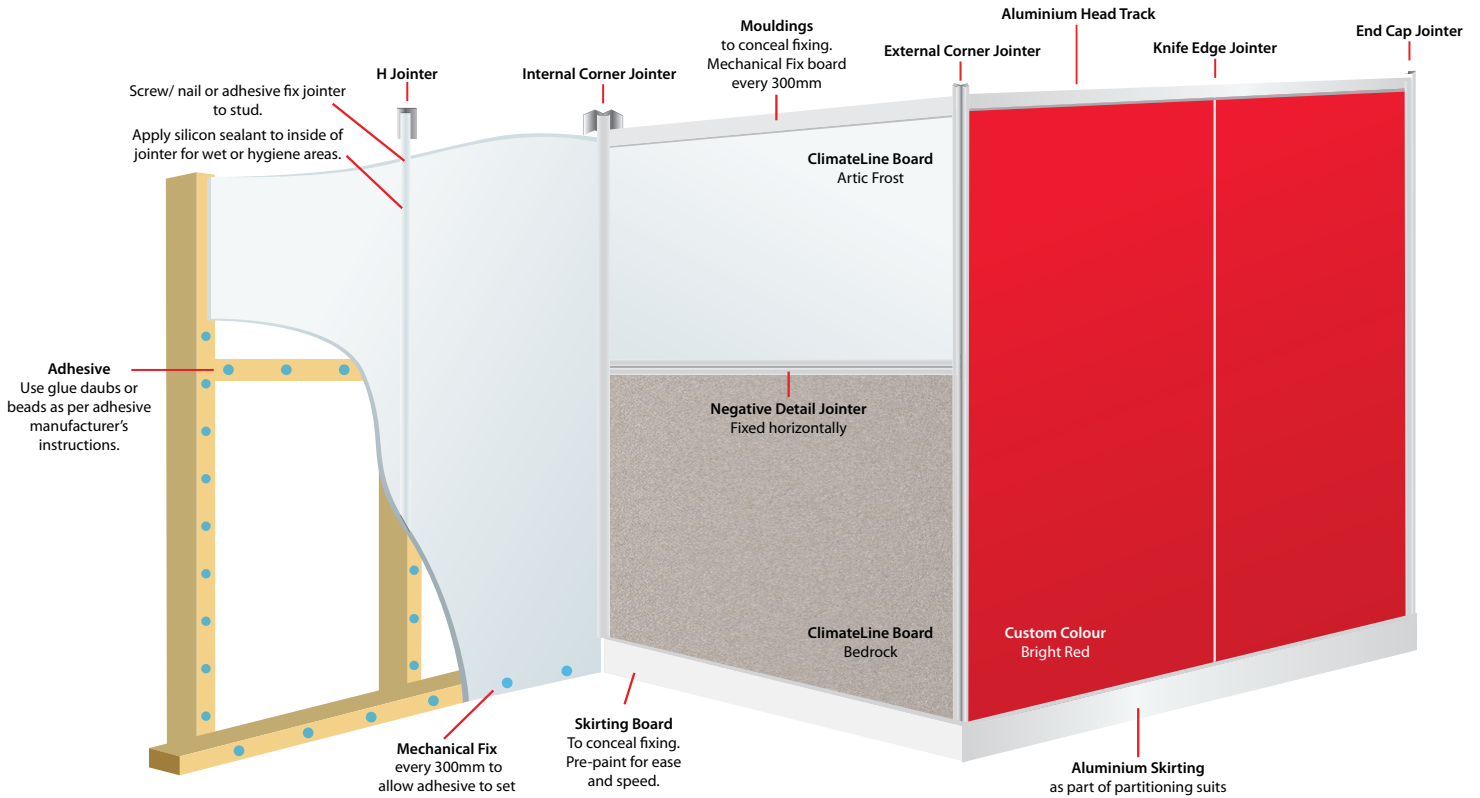
Screw Caps

Matching self adhesive screw caps for covering un-concealed fixings when installed as a ceiling lining.



Installation Information

ClimateLine® is installed using standard pre-finished lining installation techniques.
Recommended installation instructions available at www.climatesurfaces.com



* Use water based adhesive.

Limitations of Use

- Do not use as a bracing element.
- Must not be used in external situations.
- Must not be exposed to water or be installed in situations where extended exposure to humidity above 90% RH can reasonably be expected. Such areas include group shower or steam rooms and moisture and chlorine rich environments such as indoor heated swimming pools.
- Must not be exposed to temperatures in excess of 52°C for prolonged periods.



ClimateLine® is backed by a 5 year Manufacturer's Limited Warranty.
Obtain a copy of the full Warranty at www.climatesurfaces.com

Distributed By:

Manufactured by:

climate
THE CLEAN FINISH

Climate Coating Ltd

Customer Services Phone 0800 256 111
PO Box 107 018, Airport Oaks, Auckland, New Zealand
Phone (64 9) 256 7879 / Fax (64 9) 256 7872
Website www.climatesurfaces.com