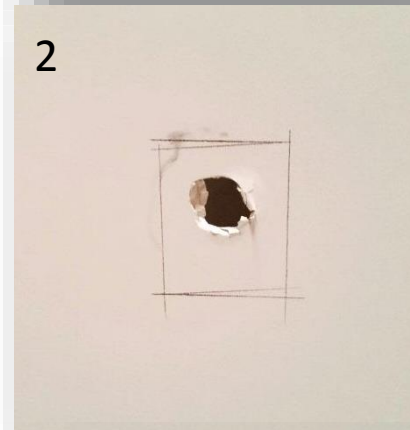


REPAIRING A SMALL TO MEDIUM SIZE HOLE

Tools & Materials: Matching paint, paint roller with 10-12mm nap, a fast drying compound such as Gib Tradefilla® or equivalent, cornice cement 45 minute, broad knife, 220 grit sandpaper, utility knife

- A plasterboard patch will be required for holes up to 150mm in diameter.
- Cut away the damaged area to a neat rectangular hole.
- Trim the edges of the hole with a utility knife to achieve a clean edge.
- Lightly sand the area around the repair to ensure the best adhesion.
- Cut a piece of plasterboard that is slightly longer (approximately 20mm) than the hole, but narrow enough to fit through the hole.
- Place a 60mm flat head nail through the centre of the piece of plasterboard and coat the ends of the plasterboard piece with cornice cement.
- Insert the patch into the hole and pull toward the front using the nail.
- Once hard (approximately 1 hour) gently push the nail back through the patch.
- Clear away any residual cornice cement material from the hole to allow a clean fit of the plasterboard patch.

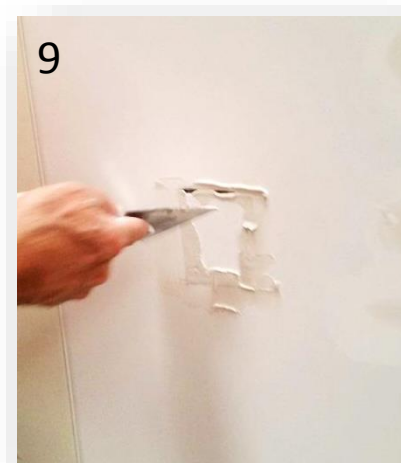
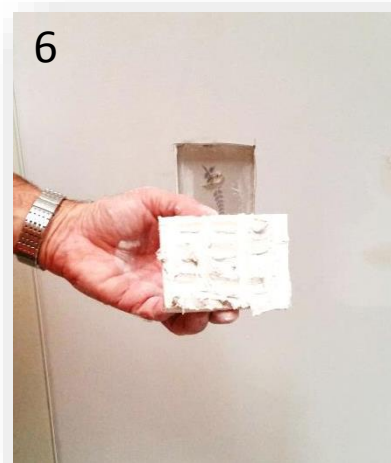


PLASTERING

- Cut a piece of plasterboard to loosely fit the hole.
- Apply cornice cement to the back of the patch and fix into place.
- Apply a layer of compound over the joints and patch extending out beyond the edge of the patch. Apply the compound in controlled smooth movements with a broad knife suitable for the size of the area.
- Over fill slightly to allow for sanding flush.
- Allow to dry as per compound manufacturers instructions.
- Sand smooth any ridges using a sanding block in a circular motion in one direction with 220 grit paper.
- If required apply a second layer of compound covering up to 100mm beyond the existing line of dry compound. This will provide a feather edge and help reduce visible signs of surface variations.

TIPS:

- ✓ TROWEL ON COMPOUND SMOOTH TO AVOID THE NEED TO SAND EXCESSIVELY OR APPLY MORE LAYERS OF COMOUND THAN NECESSARY.
- ✓ SAND THE EDGES OF THE COMPOUND SMOOTH TO AVOID THE EDGES SHOWING THROUGH THE PAINT FINISH.
- ✓ DO NOT OVER SAND WHICH MAY CREATE HOLLOWES

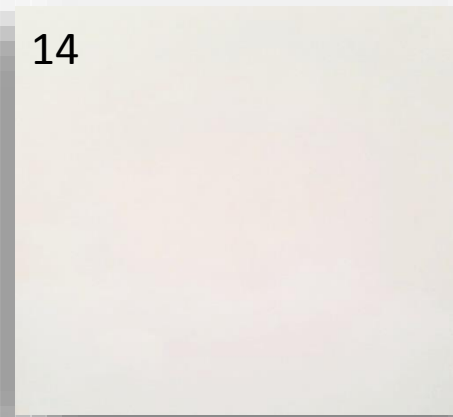
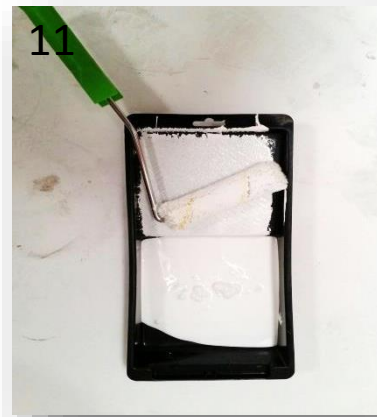


PAINTING

- Use colour matched paint supplied by Climate Surfaces
- Use a roller sleeve with a 10-12mm nap. This will give a light texture to the finish and blend in with the surrounding powder coated surface better.
- Apply two coats allowing for the first coat to dry.

TIPS

- ✓ APPLY THE PAINT BEYOND THE AFFECTED AREA IN A JAGGED PATTERN TO HELP BLEND AS BEST AS POSSIBLE WITH THE POWDER COATED SURFACE
- ✓ WHEN LOADING THE ROLLER WITH PAINT USE THE LEAST AMOUNT OF PAINT NECESSARY.
- ✓ IF THE AFFECTED AREA IS LARGE OR HAS MULTIPLE REPAIRS THEN PAINT THE ENTIRE SECTION OF CLIMATELINE FROM JOINT TO JOINT TO ACHIEVE A CONSISTENT APPEARANCE.



REPAIRING DINGS, CRACKS, SCRATCHES

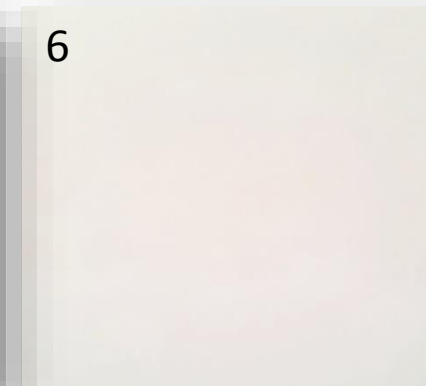
Suitable for blemishes less than 3mm deep

Tools

Broad knife, Gib Tradefilla® or equivalent compound, 220 grit sandpaper, damp sponge, utility knife.

Instructions

- Lightly sand the area around the repair to ensure adhesion between compound and powder coated surface.
- Use broad knife to apply compound to damaged area.
- Scrape back smooth before it fully hardens.
- Leave to dry (approximately 1 hour or as per manufacturers instructions).
- Sand area with a minimum 220 grit sandpaper, sanding in one direction in a circular motion.
- Using a damp sponge wipe the area smooth.
- If the blemish is deep it may be necessary to repeat the process by applying a second layer of compound to achieve a flat finish.
- Repaint using a colour matched interior acrylic paint.
- Use a roller sleeve with a 10-12mm nap. This will give a light texture to the finish and blend in with the surrounding powder coated surface better.
- Apply two coats allowing for the first coat to dry.



Plaster Compound and Paint Materials

COMPOUND

Suitable filling compound

- Paintable and doesn't need a finishing coat
- No shrinkage and hardens quickly
- Can apply a second coat after 30 minutes if necessary
- Can scrape back before it fully hardens
- Sandable once dry
- Sands to a smooth finish ready to paint or decorate
- Great to trowel and easy to achieve a smooth finish
- Chemically sets to harden and is not reliant on air drying to harden
- Strong adhesion and suitable for bedding in joint tape
- Available in a 5kg bag



Plaster Compound



Matching water based touch up and paint

PAINT

Colour Matched Water Based Acrylic Paint

- **Acrylic Paint** : Matching acrylic water based paint (available from Climate Surfaces in 1-4L tins)

www.climatesurfaces.co.nz

+64 9 2567879

info@climatesurfaces.co.nz